

Diritti riservati

All rights reserved

A

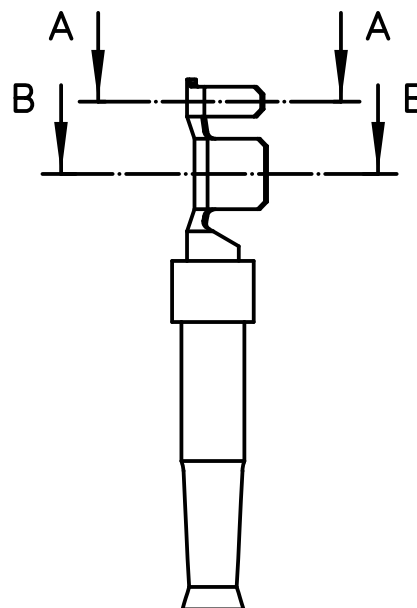
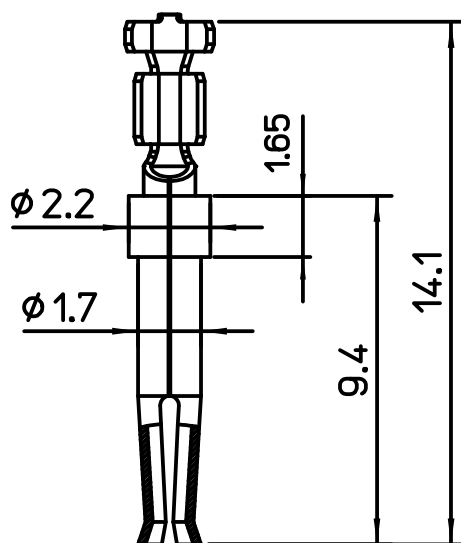
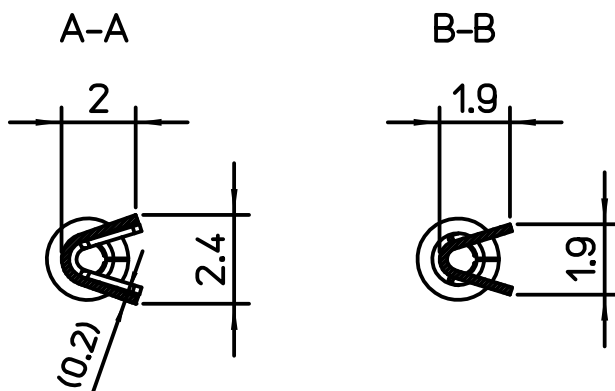
B

C

A



B

C



ILME CODE	PERFORMANCE LEVEL
SIF1D 0.5	PL1
SIF2D 0.5	PL2
SIF3D 0.5	PL3

- Selective Gold plating over Nickel in the contact area, tin plating in the crimp area, RoHS conform
- Material: brass (leadfree)
- Single contact packaging

REV	DATA	FIRMA	
		Dimensions in mm	Simplified representation with dimensions without tolerance
Original Size A4		<div>SIFxD 0.5</div> <div>Stamped female crimp contacts 5A 0.22-0.56mm², 20-24 AWG</div>	<div>Scale</div> <div>5:1</div> <div></div>
Date	29/10/19		
Sign.	Pitasi		